

MANISCOPIC

MHT 10210 L
Turbo *M Series*

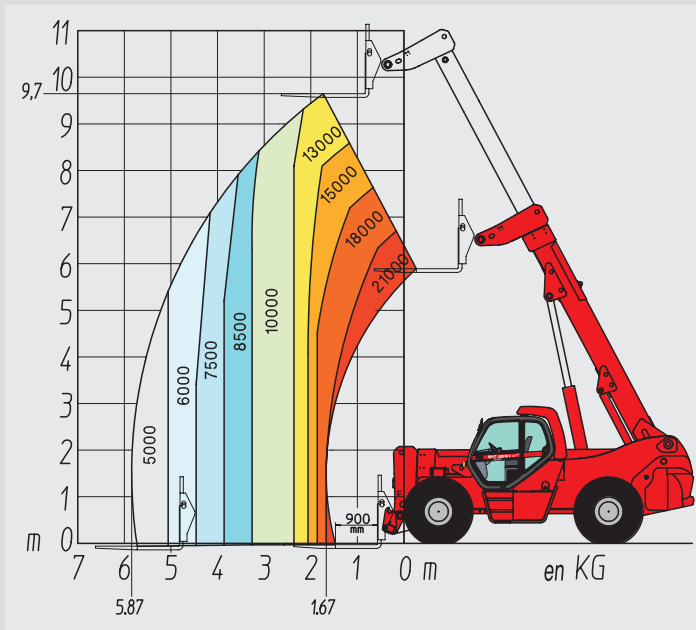


- Capacity: 21000 kg at 900 mm
- Lift height: 9.70 m
- Maximum forward reach: 5.87 m
- Engine: 175 HP
- 4 wheel steer – 4 wheel drive
- Hydrostatic transmission
- Frame levelling

 **MANITOU**

MHT 10210 L TURBO

LOAD CENTRE AT 900 MM



CAPACITY / LIFTING HEIGHT

Load centreat 900 mmat 1200 mm
Lift capacity:21000 kg16000 kg
Capacity at max. height13000 kg12000 kg
Capacity at max. front reach5000 kg4600 kg
Lift height9.70 m9.70 m
Maximum front reach5.87 m6.17 m

TRANSMISSION

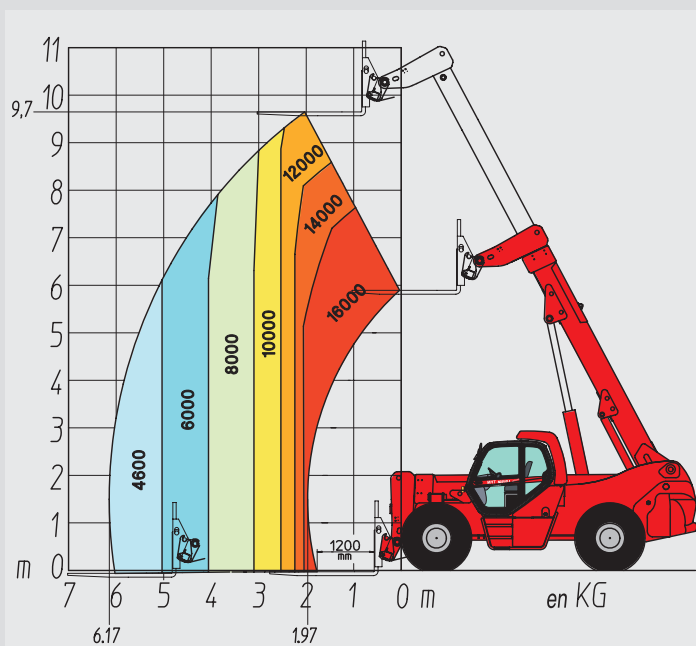
Hydrostatic transmission **REXROTH**

Hydrostatic variable flow pump125 cm ³
Hydrostatic variable cylinder engine160 cm ³
Reversing shiftelectro-magnetic
Differential central : (inter-axles)yes

2 forward and reverse speeds:

Low speed8 km/h
Fast speed25 km/h

LOAD CENTRE AT 1200 MM



HYDRAULICS

Main pump:

High pressure piston pump REXROTH Load Sensing

Capacity:75 cm ³
Maximum pressure:350 bar
Flow165 L/mn

Steering pump:

TypeLoad Sensing
Maximum pressure:210 bar

Power brake circuit pump

Gear type	
Capacity25.7 cm ³
Maximum pressure40 bar
Flow56 L/mn

Hydraulic oil radiator:

- 4 electrical fans
- 2 continuous fans
- 2 automatic fans

Distributor:

High flow hydraulic proportional REXROTH (300 L/mn) with 4 closed centre elements

Drive type:

Proportional joystick on all movements

Flexibles:

TP tube type with high pressure type flexible links

Filtration degree (micron):

Suction250 mic.
Return10 mic.
Filtration air tank10 mic.

ENGINE

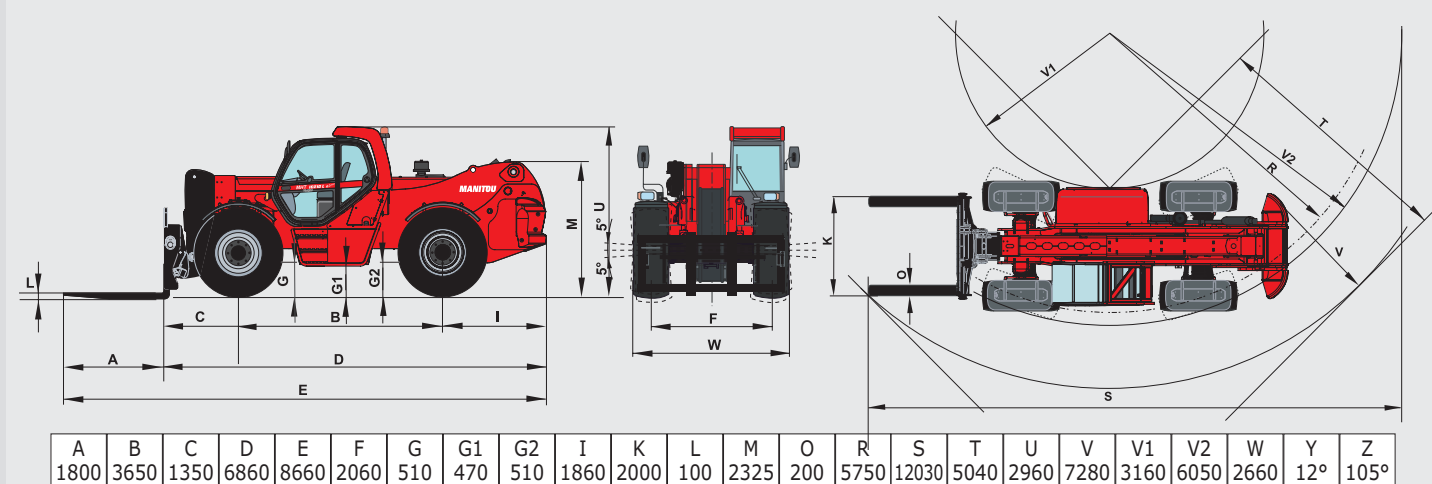
Diesel MERCEDES OM 904 LA Turbo - Intercooler - Air/Air

Capacity4 cylinders / 4250 cm ³
Power (ISO/TR 14396)175 HP / 129 kw
Rated speed2200 r.p.m.
Maximum torque at 1200 r.p.m.675 Nm
Electronic injection	

Fanpuller
Coolingwater

Anti-polluting standardsTIER 3
Air filter (type / micron)cartridge/3
Battery12 Volts
Capacity120 Ah

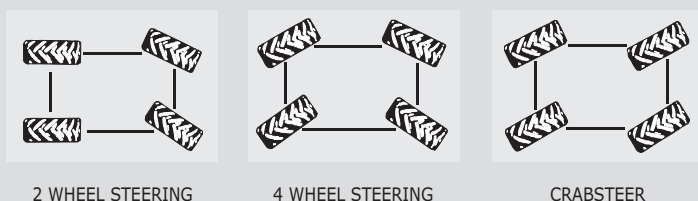
DIAGRAMS



* With tyres 23,5 R25 XLB

AXLES

Heavy Duty axles with oil bath epicyclical reduction with 3 satellites
 Integrated steering cylinders with double action in high position
 Frame levelling.....5° /5° on front axle
 3 steering modes:



BRAKES

Type.....oil bath multidiscs in both axles
 Drive type.....Hydraulic
 Parking brake on front and rear axles
 Oil bath multidisc negative parking brake

TYRES

- Model.....23,5 R25 XLB
ou 18.00 R25 XZM2
 - Pressure8 bar
 - Drawbar pull17400 daN

LIFTING/TELESCOPING MOTIONS

Unloaded lifting.....32 sec
 Unloaded lowering.....18.5 sec
 Unloaded extending internal telescope14 sec
 Unloaded retracting internal telescope.....11 sec

FORKS

Standard equipment..... TFF MT 2000, floating forks
 Dimensions.....200 x 100 x 1800 mm
 Weight of forks660 kg

CAPACITIES

Cooling circuit16 L
 Engine oil8.1 L
 Equipment hydraulic oil290 L
 Fuel tank200 L

WEIGHT

Total weight without equipment26890 kg
 Total weight unloaded with equipment28350 kg
 Total weight laden with forks49350 kg

Load on axle with standard equipment (unloaded)
 On front axle, boom retracted9320 kg
 On rear axle, boom retracted19030 kg

Load on axle with standard equipment (loaded)
 On front axle, boom retracted44250 kg
 On rear axle, boom retracted51000 kg

STANDARD EQUIPMENTS

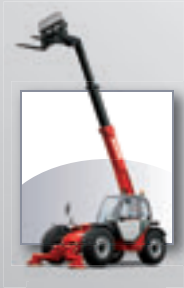
- ROPS-FOPS cabin
- GRAMMER seat
- Front and rear wipers
- Driving lights
- Rotating beacon
- Left rearview mirror
- Safety device with automatic lock of aggravating movements
- Safety valves on cylinders
- Heating
- TFF

OPTIONS

- Air conditioning
- Comfort seat
- Roof wipers
- Cabin rearview mirror

Manitou, material handling world leader

Inventor of the rough terrain forklift truck, Manitou offers today the most comprehensive range to meet all specific handling and personal lifting requirements :



MANISCOPIC
Telescopic trucks



MANITOU
Rough terrain and semi industrial masted trucks



MANIACCESS
Access equipment



Twisco
Compact telescopic handler



MANIHOE
Backhoe/Loader with telescopic boom



MANITRANSIT
Truck mounted forklifts



MANILOADER
Articulated wheeled loaders



MANILEC
Electric pallet trucks and electric stackers

A network of skilled professionals at your service !

With a network of 600 service and parts centres in more than 120 countries, Manitou provides an efficient after-sales support based on the expertise of thousands of factory trained technicians.



The equipment supplied with each model may differ from that described in this leaflet. For more details, contact your MANITOU dealer.